



BIKE/APPAREL  
SURFING ELEMENTS 16



S U R F I N G

T R A I L S



## BIKEWEAR RANGE

### TRAZE / GRAZE

LIGHTWEIGHT, HIGHLY BREATHABLE  
ALL MOUNTAIN & ENDURO LINE

### SCRUB / BLIZZ

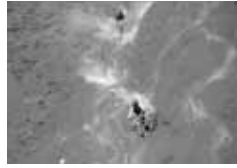
LIGHTWEIGHT, HIGHLY DURABLE  
ENDURO & FREERIDE LINE

### ROAM / LUZID

CASUAL, HIGHLY FUNCTIONAL  
ENDURO, PARK & URBAN LINE

### SLASH

PROTECTIVE, EXTRA DURABLE DH  
& BIG MOUNTAIN FREERIDE LINE



ALL MOUNTAIN

ENDURO

ENDURO

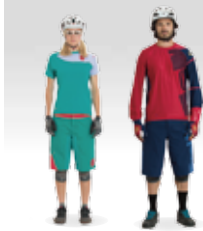
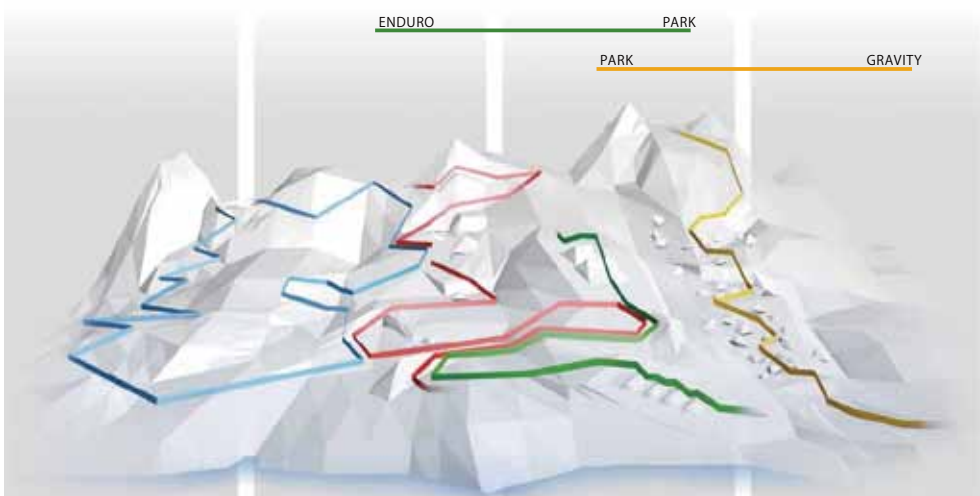
FREERIDE/PARK

ENDURO

PARK

PARK

GRAVITY



SLIM\_FIT



REGULAR\_FIT



REGULAR\_FIT



LOOSE\_FIT

Second skin fit of your bib-shorts. Classic athletic Slim fit, not tight, but cut close to the shape of your body for best possible performance. Maximum freedom of movement achieved by an almost baggy style cut.

## PROTECTION RANGE

### SLEEVES

ABRASION PROTECTION  
FOR MULTIFACETED  
ALL MOUNTAIN RIDING

### LITES

LIGHT IMPACT PROTECTION  
FOR ENDURO STYLE  
TRAIL RIDING

### PACTS

HEAVY IMPACT PROTECTION FOR  
PROGRESSIVE ENDURO & FREERIDE  
STYLE RIDING

### CAPS

FULL GUARD PROTECTION FOR ALL  
DEMANDS OF UNCOMPROMISING  
GRAVITY MOUNTAIN BIKING

ALL MOUNTAIN

ENDURO

ENDURO

FREERIDE/PARK

ENDURO

PARK

PARK

GRAVITY



K\_SLEEVE

E\_SLEEVE



K\_LITE ZIP

BD SOCK 2.0 E\_LITE



K\_PACT

S\_PAD

E\_PACT



K\_CAP\_SELECT

K\_CAP EVO

## GLOVE RANGE



PATH

LIGHTWEIGHT, HIGHLY BREATHABLE  
ALL MOUNTAIN & ENDURO GLOVE



GAT

LIGHTWEIGHT, HIGHLY DURABLE  
ENDURO & FREERIDE GLOVE



DUDE

HIGHLY FUNCTIONAL  
ENDURO, PARK & URBAN GLOVE



LEDGE

PROTECTIVE, EXTRA DURABLE DH  
& BIG MOUNTAIN FREERIDE GLOVE

B  
I  
K  
E  
  
2  
0  
1  
6

# T R A Z E

## TRAZE

LIGHTWEIGHT, HIGHLY BREATHABLE, LS HELIX  
ALL MOUNTAIN & ENDURO LINE

### NANO BAMBOO CHARCOAL FABRIC

- . Cooling effect
- . Sanitized treatment
- . Quick\_Dry finishing



### MESH\_PANELS

- . For additional ventilation

### SMART FEATURES

- . Integrated Clear\_Optics glasses wipe
- . Reflective\_Details for additional safety on evening rides

### VERTEX

#### JET\_STREAM

- . Additional climate control
- . Lasercut holes grant for additional airflow



### COOLMAXFABRIC

- . Ultra breathable
- . Fast drying

### WAIST\_REGULATION

- . For perfect adjustment and comfort

### PHONE\_POUCH

- . Protects your mobile device
- . Reflective\_Details
- . For additional safety on evening rides





## TEE LS HELIX

ITEM NO. 47602-5056

AVAILABLE FALL '15



SIZES: 48/S, 50/M, 52/L, 54/XL, 56/XXL | FIT: Casual\_Fit  
 COLORWAYS: 900 black (F '15) 466 crimson red

### KEY FEATURES

. NANO BAMBOO CHARCOAL POLYESTER  
 . SANITIZED\*

### FEATURES

. Clear\_Optics, Reflective\_Details

### FABRICS

. 58% Polyester /  
 . 34% Nano Bamboo Charcoal /  
 . 8% Elasthane

## TEE HALF ZIP SS HELIO

ITEM NO. 47602-5053

AVAILABLE SPRING '16



SIZES: 48/S, 50/M, 52/L, 54/XL, 56/XXL | FIT: Casual\_Fit  
 COLORWAYS: 645 olive 466 crimson red

### KEY FEATURES

. NANO BAMBOO CHARCOAL POLYESTER  
 . SANITIZED\*

### FEATURES

. Clear\_Optics, Reflective\_Details

### FABRICS

. 58% Polyester /  
 . 34% Nano Bamboo Charcoal /  
 . 8% Elasthane

## TEE FULL ZIP SS QUEST

ITEM NO. 47602-5051

AVAILABLE SPRING '16



SIZES: 48/S, 50/M, 52/L, 54/XL, 56/XXL | FIT: Performance\_Fit  
 COLORWAYS: 900 black 730 palace blue

### KEY FEATURES

. REFLECTIVE\_DETAILS

### FEATURES

. 3 elastic storage pockets, Zip on center front for an easy change and additional ventilation

### FABRICS

. 74% Polyester /  
 . 26% Elasthane

## TEE SS STRAIT

ITEM NO. 47602-5050

AVAILABLE FALL '15



SIZES: 48/S, 50/M, 52/L, 54/XL, 56/XXL | FIT: Casual\_Fit  
 COLORWAYS: 900 black (F '15) 645 olive (F '15) 466 crimson red

### KEY FEATURES

. NANO BAMBOO CHARCOAL POLYESTER  
 . SANITIZED\*

### FEATURES

. Clear\_Optics, Reflective\_Details

### FABRICS

. 58% Polyester /  
 . 34% Nano Bamboo Charcoal /  
 . 8% Elasthane

## BIKESHORT VERTEX

ITEM NO. 47602-5750

AVAILABLE FALL '15



SIZES: 30/S, 32/M, 34/L, 36/XL, 38/XXL | FIT: Regular\_Fit  
 COLORWAYS: 900 black (F '15) 645 olive (F '15) 785 night blue 466 crimson red

### KEY FEATURES

. 2WAY\_STRETCH COOLMAX\* FABRIC  
 . JET\_STREAM  
 . WAIST\_REGULATION

### FEATURES

. Phone\_Pouch, Back\_Yoke, Reflective\_Details, 1 zipper back pocket, 2 front hand pockets

### FABRICS

. fabric 1:  
 . 65% Polyester /  
 . 35% COOLMAX  
 . fabric 2:  
 . 88% Polyamid /  
 . 12% Elasthane

## TEE HALF ZIP SS QUEST

ITEM NO. 47602-5052

AVAILABLE SPRING '16



SIZES: 48/S, 50/M, 52/L, 54/XL, 56/XXL | FIT: Performance\_Fit  
 COLORWAYS: 900 black 730 palace blue

### KEY FEATURES

. REFLECTIVE\_DETAILS

### FEATURES

. 3 elastic storage pockets, Zip on center front for an easy change and additional ventilation

### FABRICS

. 74% Polyester /  
 . 26% Elasthane

## BIKESHORT EPIC

ITEM NO. 47602-5751

AVAILABLE SPRING '16



SIZES: 30/S, 32/M, 34/L, 36/XL, 38/XXL | FIT: Regular\_Fit  
 COLORWAYS: 900 black 730 palace blue

### KEY FEATURES

. 4WAY\_STRETCH FABRIC

### FEATURES

. Reflective\_Details, 1 zip pocket

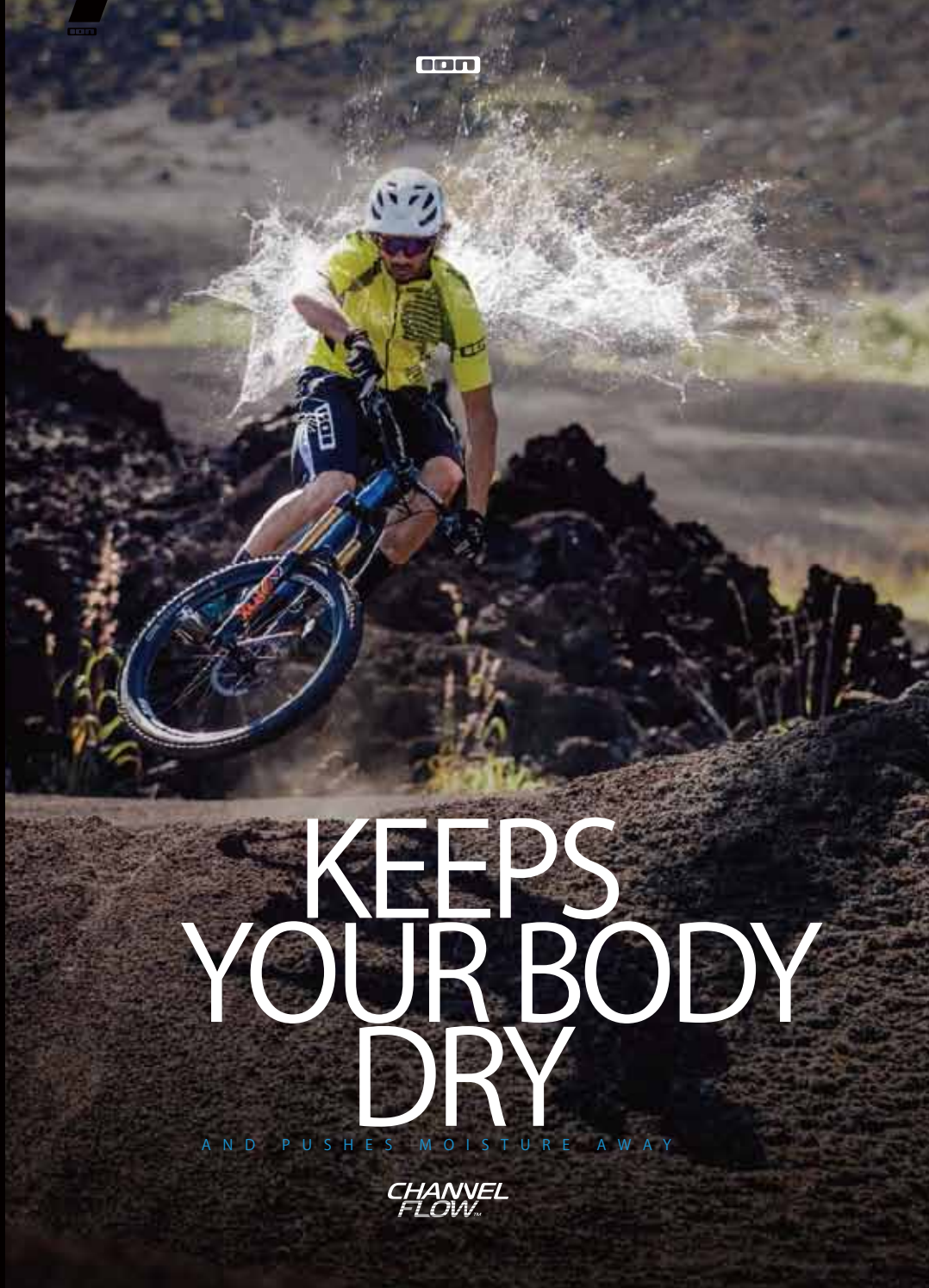
### FABRICS

. 86% Polyester /  
 . 14% Elasthane

FEATURED PRODUCT

BIKE 2016

BIKE WEA R M E N



ODN

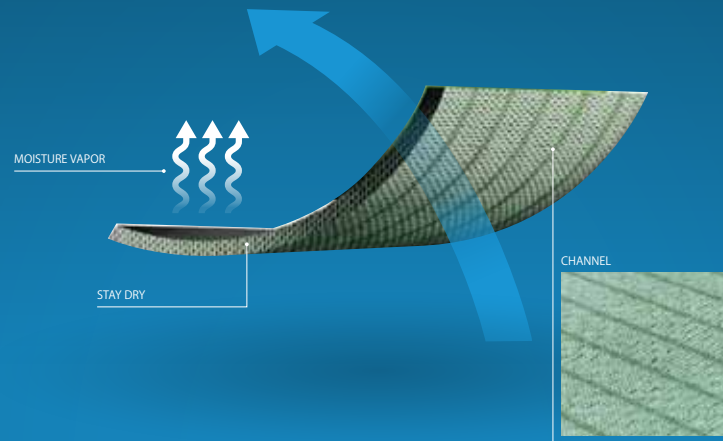
# KEEPS YOUR BODY DRY

AND PUSHES MOISTURE AWAY

CHANNEL FLOW™

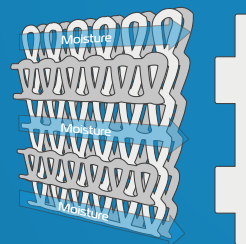
## CHANNEL FLOW

THE ULTIMATE DRY EXPERIENCE



### CHANNEL STRUCTURE

• Skin side stays dry  
• Water goes in the channels and quickly absorbed



### Stay Dry

UNIQUE INSTANT WICKING DESIGN KEEPS ATHLETES COSY AND DRY

Channel construction pushes moisture away from body to surface layer where it can evaporate faster. The unique design keeps athletes dry and comfortable in any sports they love. The proven Channel Flow™ technology will not leave athletes with any unpleasant feeling.

### Chill Stop

ADVANCED MOISTURE MANAGEMENT CHANNELS STOP THE CHILL AFTER EXERCISING

Channel Flow™ technology was developed to combat moisture. The moisture flows through the channels to surface layer helps prevent athletes encounter any chills. Keeping them warm and active from beginning to end.

### Work Smart

DUAL LAYER DRY TECHNOLOGY ENHANCES PERFORMANCE

Unique dual-layer structure creates channels for moisture to vaporize. The signature inner lining helps keep athletes dry.

B  
I  
K  
E  
W  
E  
A  
R  
  
M  
E  
N

B  
I  
K  
E  
  
2  
0  
1  
6



## TEE FULL ZIP SS AERATOR

ITEM NO. 47602-5054

AVAILABLE FALL '15



CHANNEL FLOW LITE



SIZES: 48/S, 50/M, 52/L, 54/XL, 56/XXL | FIT: Performance fit  
COLORWAYS: 900 black (F '15) 633 lime (F '15)

### KEY FEATURES

- . CHANNEL\_FLOW\_LITE
- . THERMO\_MAPPING

### FEATURES

- . Clear\_Optics, Phone\_Pouch, Reflective\_Details, 1 zipper pocket, 3 elastic storage pockets, Zip on center front for an easy change and additional ventilation

### FABRICS

- . 97% Polyester / 3% Elasthane
- . 93% Polyester / 7% Elasthane
- . 96% Polyester / 4% Elasthane



THERMO\_MAPPING INSERT

## BIBSHORT AERATION

ITEM NO. 47602-5753

AVAILABLE SPRING '16



4WAY stretch

CHANNEL FLOW LITE

SIZES: 30/S, 32/M, 34/L, 36/XL, 38/XXL | FIT: Regular\_Fit  
COLORWAYS: 900 black 645 olive

### KEY FEATURES

- . 4WAY\_STRETCH FABRIC
- . THERMO\_MAPPING
- . CHANNEL\_FLOW\_LITE

### FEATURES

- . Anti\_Glide, Reflective\_Details, Bonded\_Seams, 1 zip pocket, Vortex chamy

### FABRICS

- . 97% Polyester / 3% Elasthane
- . 93% Polyester / 7% Elasthane
- . 96% Polyester / 4% Elasthane



ANTI\_GLIDE

## BIKESHORT AERATION

ITEM NO. 47602-5752

AVAILABLE SPRING '16



4WAY stretch

SIZES: 30/S, 32/M, 34/L, 36/XL, 38/XXL | FIT: Slim\_Fit  
COLORWAYS: 900 black

### KEY FEATURES

- . MESH\_PANELS
- . JET\_STREAM
- . VENT\_ZIPS

### FEATURES

- . Vent\_Zips, Mesh\_Panels, Jet\_Stream, Flex\_Waist, 1 zip pocket right hand side

### FABRICS

- . 86% Polyester / 14% Elasthane



VENT\_ZIP & MESH\_PANELS

## TEE FULL ZIP LS CREST

ITEM NO. 47602-5055

AVAILABLE FALL '15



CHANNEL FLOW LITE

SIZES: 48/S, 50/M, 52/L, 54/XL, 56/XXL | FIT: Performance\_Fit  
COLORWAYS: 900 black (F '15) 633 lime (F '15) 730 palace blue

### KEY FEATURES

- . PHONE\_POUCH
- . CLEAR\_OPTICS

### FEATURES

- . Reflective\_Details, 1 zipper pocket, 3 elast storage pockets, Zip on center front for easy change and additional ventilation

### FABRICS

- . 74% Polyester / 26% Elasthane

## BIBSHORT PACE

ITEM NO. 47602-5754

AVAILABLE SPRING '16



4WAY stretch

SIZES: 30/S, 32/M, 34/L, 36/XL, 38/XXL | FIT: Regular\_Fit  
COLORWAYS: 900 black 730 palace blue

### KEY FEATURES

- . 4WAY\_STRETCH FABRIC

### FEATURES

- . Anti\_Glide, Reflective\_Details, 1 zip pocket, Rekord chamy

### FABRICS

- . 97% Polyester / 3% Elasthane
- . 93% Polyester / 7% Elasthane

FEATURED PRODUCT

FEATURED PRODUCT

BIKEWEAR

ME

2016

# SCRUB

LIGHTWEIGHT, HIGHLY DURABLE,  
ENDURO & FREERIDE LINE



## HELIUM LS

### DRIRELEASE JACQUARD MESH

- . The look and feel of cotton, but with the benefits of a high-performance fabric
- . Dries four times faster than regular cotton
- . Adding extra ventilation to the casual look



### SMART FEATURES

- . Small Ticket\_Port for your lift ticket or other essentials
- . Integrated Clear\_Optics microfiber glasses wipe

## AVIC

### 4WAY\_STRETCH SOFTSHELL FABRIC

- . Maximum freedom of movement
- . Lightweight, yet durable
- . Superior performance in terms of ventilation and tensile strength
- . Basic protection from wind & rain



### BOARDSHORTS\_CLOSURE

- . Perfect adjustability and great comfort
- . Boardshorts Style

### LACE\_PORTS

- . Holds the laces safely
- . Barspin resistant

### BONDED\_SEAMS

- . Very flat, but still super durable

### SANITIZED TREATMENT

- . For long lasting freshness

SURFING TRAILS



## TEE LS HELIUM

ITEM NO. 47602-5014

AVAILABLE FALL '15



SIZES: 48/S, 50/M, 52/L, 54/XL, 56/XXL | FIT: Loose\_Fit  
COLORWAYS: 900 black (F '15) 645 olive (F '15)  
785 night blue 466 crimson red

### KEY FEATURES

- . CLEAR\_OPTICS
- . TICKET\_PORT

### FEATURES

- . Reflective\_Details

### FABRICS

- . fabric 1:  
85% Polyester /  
15% Cotton
- . fabric 2:  
100% Polyester

## TEE LS 3/4 HELIUM

ITEM NO. 47602-5013

AVAILABLE SPRING '16



SIZES: 48/S, 50/M, 52/L, 54/XL, 56/XXL | FIT: Loose\_Fit  
COLORWAYS: 900 black 645 olive 785 night blue

### KEY FEATURES

- . CLEAR\_OPTICS
- . TICKET\_PORT

### FEATURES

- . Reflective\_Details

### FABRICS

- . fabric 1:  
85% Polyester /  
15% Cotton
- . fabric 2:  
100% Polyester

## TEE SS HELIUM

ITEM NO. 47602-5012

AVAILABLE SPRING '16



SIZES: 48/S, 50/M, 52/L, 54/XL, 56/XXL | FIT: Loose\_Fit  
COLORWAYS: 900 black 645 olive 466 crimson red

### KEY FEATURES

- . CLEAR\_OPTICS
- . TICKET\_PORT

### FEATURES

- . Reflective\_Details

### FABRICS

- . fabric 1:  
85% Polyester /  
15% Cotton
- . fabric 2:  
100% Polyester

## TANK HELIUM

ITEM NO. 47602-5010

AVAILABLE SPRING '16



SIZES: 48/S, 50/M, 52/L, 54/XL, 56/XXL | FIT: Loose\_Fit  
COLORWAYS: 900 black 466 crimson red

### KEY FEATURES

- . CLEAR\_OPTICS
- . TICKET\_PORT

### FEATURES

- . Reflective\_Details

### FABRICS

- . 100% Polyester

## BIKESHORT AVIC

ITEM NO. 47602-5710

AVAILABLE FALL '15



SIZES: 30/S, 32/M, 34/L, 36/XL, 38/XXL | FIT: Loose\_Fit  
COLORWAYS: 900 black (F '15) 633 lime (F '15)  
735 sea blue

### KEY FEATURES

- . 4WAY\_STRETCH FABRIC
- . BOARDSHORTS\_CLOSURE
- . BONDED\_SEAMS

### FEATURES

- . Phone\_Pouch: Integrated water-repellent fabric 1:  
smartPhone\_Pouch, Boardshorts\_Closure 88% Polyamid /  
with Lace\_Ports, Bonded\_Seams, 12% Elasthane
- 2 zip front pockets, Reflective\_Details

### FABRICS

- . fabric 2:  
48% Polyester /  
41% Polyamid /  
11% EA



WAIST REGULATION

## TEE SS SCRUB

ITEM NO. 47600-5011

AVAILABLE SPRING '16



SIZES: 44/XXS, 46/XS, 48/S, 50/M, 52/L, 54/XL, 56/XXL | FIT: Loose\_Fit  
COLORWAYS: 900 black 633 lime

### KEY FEATURES

- . SANITIZED\*

### FABRICS

- . 100% Polyester

## BIKESHORT BLADE

ITEM NO. 47602-5711

AVAILABLE SPRING '16



SIZES: 30/S, 32/M, 34/L, 36/XL, 38/XXL | FIT: Loose\_Fit  
COLORWAYS: 900 black 785 night blue

### KEY FEATURES

- . 2WAY\_STRETCH FABRIC
- . WAIST\_REGULATION

### FEATURES

- . 1 zip pocket

### FABRICS

- . 100% Polyester

2WAY STRETCH

B  
I  
K  
E  
W  
E  
A  
R  
  
M  
E  
N

B  
I  
K  
E  
  
2  
0  
1  
6





# ROAM

CASUAL, HIGHLY FUNCTIONAL  
ENDURO, PARK & URBAN LINE

## ROAM LS

### CASUAL STYLING

- . Sportive and functional long sleeve with soft hand feel
- . Longer back section and sleeves for bike-specific use
- . Meshinserts under arm for extraventilation



### DRIRELEASE FABRIC

- . Looks like regular cotton but dries four times faster

### SMART FEATURES

- . Integrated glasses wipe
- . Reflective Details
- . Hidden Ticket\_Port



## TRANSIT

### FUNCTIONAL URBAN STYLE

- . Cargo shorts in a comfortable, bike-specific fit
- . Flexible and robust

### 2WAY\_STRETCH

- . For full freedom of movement in any situation

### TRIPLE STITCH\_SEAMS

- . For added stability in the most stressed areas



### SMART FEATURES

- . Invisible water-repellent Phone\_Pouch in right pocket
- . Elastic Back\_Yoke guarantees perfect fit when pedalling and shredding hard



R O A M

B  
I  
K  
E  
W  
E  
A  
R  
M  
E  
N

B  
I  
K  
E  
2  
0  
1  
6



**drirelease®**

DRIES  
4 TIMES  
FASTER  
THAN  
COTTON

B  
I  
K  
E  
  
2  
0  
1  
6



F  
E  
A  
T  
U  
R  
E  
D  
P  
R  
O  
D  
U  
C  
T

### TEE SS MADION

ITEM NO. 47602-5031

AVAILABLE SPRING '16



SIZES: 48/S, 50/M, 52/L, 54/XL, 56/XXL | FIT: Regular\_Fit  
COLORWAYS: ■ 165 stone grey ■ 730 palace blue

#### KEY FEATURES

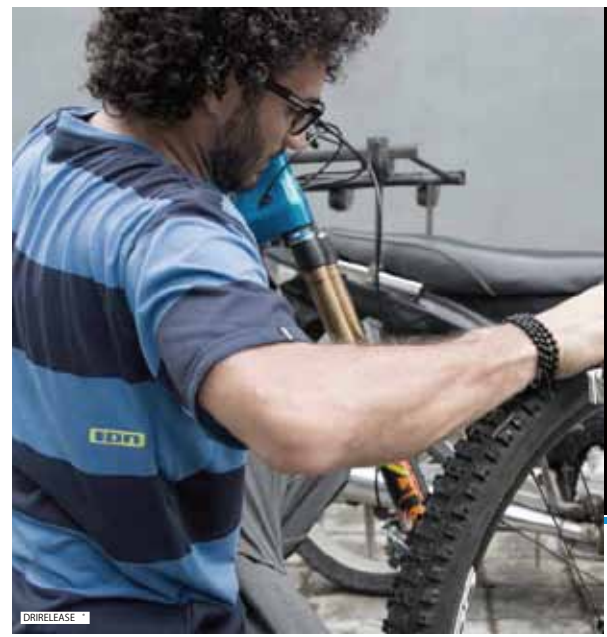
- .DRIRELEASE™ WITH FRESHGUARD\*
- .SANITIZED\*

#### FEATURES

.Clear\_Optics, Reflective\_Details

#### FABRICS

.85% Polyester / 15% Cotton



DRIRELEASE

B  
I  
K  
E  
W  
E  
A  
R  
  
M  
E  
N

### TEE LS ROAM

ITEM NO. 47602-5033

AVAILABLE SPRING '16



SIZES: 48/S, 50/M, 52/L, 54/XL, 56/XXL | FIT: Regular\_Fit  
COLORWAYS: ■ 900 black ■ 646 olive melange

#### KEY FEATURES

- .DRIRELEASE™ WITH FRESHGUARD\*
- .SANITIZED\*

#### FEATURES

.Clear\_Optics, Reflective\_Details

#### FABRICS

.85% Polyester / 15% Cotton

### BIKESHORT TRANSIT

ITEM NO. 47602-5730

AVAILABLE SPRING '16



SIZES: 30/S, 32/M, 34/L, 36/XL, 38/XXL | FIT: Regular\_Fit  
COLORWAYS: ■ 901 black melange ■ 736 sea blue melange

#### KEY FEATURES

- .2WAY\_STRETCH FABRIC
- .TRIPLE STITCH\_SEAMS
- .PHONE\_POUCH

#### FEATURES

.Back\_Yoke, Jet\_Stream, Waist\_Regulation, fabric 1: Reflective\_Details, 2 hand pockets, 2 Velcro 61%Polyamid / closed rear pockets, 1 flap side pocket with zip

#### FABRICS

35% Polyester / 4% Elasthane  
fabric 2: 100% Polyester

## TEE SS STATIC

ITEM NO. 47602-5032

AVAILABLE SPRING '16



SIZES: 48/S, 50/M, 52/L, 54/XL, 56/XXL | FIT: Regular\_Fit  
 COLORWAYS: 900 black 466 crimson red  
 730 palace blue

### KEY FEATURES

.DRIRELEASE\* WITH FRESHGUARD\*  
 .SANITIZED\*

### FEATURES

.Clear\_Optics, Reflective\_Details

### FABRICS

. 85%Polyester /  
 15% Cotton

## TEE SS LOGO DR

ITEM NO. 47600-5000

AVAILABLE FALL '15



SIZES: 44/XXS, 46/XS, 48/S, 50/M, 52/L, 54/XL, 56/XXL  
 FIT: Regular\_Fit  
 COLORWAYS: 900 black (F '15) 466 crimson red  
 646 olive melange (F '15) 735 sea blue

### KEY FEATURES

.DRIRELEASE\* WITH FRESHGUARD\*

### FABRICS

. 85%Polyester /  
 15% Cotton

## SHIRT LS STROKE

ITEM NO. 47602-5630

AVAILABLE SPRING '16



SIZES: 48/S, 50/M, 52/L, 54/XL, 56/XXL | FIT: Regular\_Fit  
 COLORWAYS: 735 sea blue

### KEY FEATURES

.2WAY\_STRETCH WITH COOLMAX\*  
 .CLEAR\_OPTICS

### FEATURES

.Vent\_Gap, Reflective\_Details

### FABRICS

. 70% Polyester /  
 27% Polyester Coolmax /  
 3% Elasthane

## WIND JKT RAYDER

ITEM NO. 47602-5406

AVAILABLE FALL '15



SIZES: 48/S, 50/M, 52/L, 54/XL, 56/XXL | FIT: Regular\_Fit  
 COLORWAYS: 900 black (F '15)

### KEY FEATURES

.SPLASH\_BACK  
 .ADJUSTABLE\_HOOD

### FEATURES

. Reflective\_Details, 2 zip pockets

### FABRICS

. 100% Polyester

## BIKESHORT HAZARD

ITEM NO. 47602-5732

AVAILABLE SPRING '16



SIZES: 30/S, 32/M, 34/L, 36/XL, 38/XXL | FIT: Regular\_Fit  
 COLORWAYS: 900 black 166 stone 200 grey melange

### KEY FEATURES

.4WAY\_STRETCH FABRIC  
 .PHONE\_POUCH

### FEATURES

.Waist\_Regulation: waistband adjuster  
 inside, 1 zip pocket, right back part

### FABRICS

. colorway 900 900 black:  
 88% Polyamid /  
 12% Elasthane  
 . colorway 166 166 stone 200  
 grey melange:  
 PO3134M2PR

## TANK PILGRIM

ITEM NO. 47602-5030

AVAILABLE SPRING '16



SIZES: 48/S, 50/M, 52/L, 54/XL, 56/XXL | FIT: Regular\_Fit  
 COLORWAYS: 735 sea blue

### KEY FEATURES

.DRIRELEASE\* WITH FRESHGUARD\*

### FEATURES

.Clear\_Optics, Reflective\_Details

### FABRICS

. 85%Polyester /  
 15% Cotton

## PANT PERIL

ITEM NO. 47500-5110

AVAILABLE FALL '15



SIZES: 48/S, 50/M, 52/L, 54/XL, 56/XXL | FIT: Regular\_Fit  
 COLORWAYS: 790 insignia blue denim (F '15)

### KEY FEATURES

. 5 POCKET JEANS SHORTS  
 .2WAY\_STRETCH CORDURA\* FABRIC  
 .PHONE\_POUCH

### FEATURES

.Seat\_Gusset, Vent\_Gap, Triple Stitch\_  
 Seams, U-Lock\_Holder, Lace\_Belt

### FABRICS

. 18% Cordura /  
 77% Cotton /  
 4 % EA

## PANT CROMO

ITEM NO. 47502-5130

AVAILABLE FALL '15



SIZES: 30/S, 32/M, 34/L, 36/XL, 38/XXL | FIT: Slim\_Fit  
 COLORWAYS: 790 insignia blue denim (F '15)

### KEY FEATURES

.SLIM\_FIT 5 POCKET JEANS  
 .2WAY\_STRETCH CORDURA\* FABRIC  
 .PHONE\_POUCH

### FEATURES

.2way\_Stretch Cordura fabric,  
 U-Lock\_Holder, Triple Stitch\_Seams,  
 Reflective\_Details

### FABRICS

. 18% Cordura /  
 77% Cotton /  
 4 % EA

# SLASH



## SLASH

PROTECTIVE, EXTRA DURABLE DH & BIG MOUNTAIN FREERIDE LINE

### VOLTAGE

#### MESH FABRICS

. Very breathable pique mesh



#### SANITIZED

. For long lasting freshness

#### SMART FEATURES

. Ticket\_Port for lift pass  
. Clear\_Optics goggles wipe



### SABOTAGE

#### DH SPECIFIC FABRICS

. Lightweight, flexible and durable  
. More durable fabrics at the knees and seat for better protection  
. Flexible fabrics in all "pedaling areas"  
. Neoprene reinforcements for additional protection



#### WATER REPELLENCY

. DWR treatment  
. PU coating

#### TRIPLE STITCH\_SEAMS

. For extra durability

#### WAIST\_REGULATION

. For individual adjustment  
. Rip inserts for the perfect fit





## TEE LS VOLTAGE

ITEM NO. 47600-5070

AVAILABLE SPRING '16



SIZES: 44/XXS, 46/XS, 48/S, 50/M, 52/L, 54/XL, 56/XXL  
 FIT: Loose\_Fit  
 COLORWAYS: 900 black 466 crimson red

### KEY FEATURES

- .SANITIZED\*
- .CLEAR\_OPTICS

### FEATURES

.Ticket\_Port

### FABRICS

. 100% Polyester

## PANT SABOTAGE

ITEM NO. 47600-5170

AVAILABLE SPRING '16



SIZES: 48/S, 50/M, 52/L, 54/XL, 56/XXL | FIT: Loose\_Fit  
 COLORWAYS: 900 black 466 crimson red

### KEY FEATURES

- .4WAY\_STRETCH FABRIC
- .WAIST\_REGULATION
- .PHONE\_POUCH

### FEATURES

.Repellen\_SI, Neo\_Padding, Triple\_Stitcher fabric 1: seams, 2 front zipper pockets, Back\_Yoke, Reflective\_Details

### FABRICS

fabric 1: 88% Polyamid / 12% Elasthane  
 fabric 2: 100% Polyamid  
 fabric 3: 100% Polyester  
 fabric 4: 55% Neoprene / 45% Polyamid

## TEE LS VICE

ITEM NO. 47600-5071

AVAILABLE SPRING '16



SIZES: 44/XXS, 46/XS, 48/S, 50/M, 52/L, 54/XL, 56/XXL  
 FIT: Loose\_Fit  
 COLORWAYS: 900 black 645 olive

### KEY FEATURES

- .SANITIZED\*

### FABRICS

. 100% Polyester

## BIKESHORT SABOTAGE

ITEM NO. 47600-5770

AVAILABLE SPRING '16



SIZES: 28/XS, 30/S, 32/M, 34/L, 36/XL, 38/XXL | FIT: Loose\_Fit  
 COLORWAYS: 900 black 466 crimson red

### KEY FEATURES

- .4WAY\_STRETCH FABRIC
- .WAIST\_REGULATION
- .PHONE\_POUCH

### FEATURES

.Repellen\_SI, Neo\_Padding, Triple\_Stitcher fabric 1: seams, 2 front zipper pockets, Back\_Yoke, Reflective\_Details

### FABRICS

fabric 1: 88% Polyamid / 12% Elasthane  
 fabric 2: 100% Polyamid  
 fabric 3: 100% Polyester  
 fabric 4: 55% Neoprene / 45% Polyamid

GRAZE

# GRAZE

LIGHTWEIGHT, HIGHLY BREATHABLE,  
ALL MOUNTAIN & ENDURO LINE

## PURE

### MESH\_PANELS

. For additional ventilation

### SMART FEATURES

. Integrated Clear\_Optics glasses wipe  
. Reflective\_Details for additional safety on evening rides



## IVY

### JET\_STREAM

. Additional climate control  
. Lasercut holes grant for additional airflow



### COOLMAX®FABRIC

. Ultra breathable  
. Fast drying



### WAIST\_REGULATION

. For perfect adjustment and comfort

### PHONE\_POUCH

. Protects your mobile device  
. Reflective\_Details  
. For additional safety on evening rides





## TEE SS PURE

ITEM NO. 47603-5062

AVAILABLE SPRING '16



SIZES:34/XS, 36/S, 38/M, 40/L, 42XL | FIT:Performance\_fit  
COLORWAYS: 900 black 455 hibiscus 665 river green

### KEY FEATURES

- .SANITIZED\*
- .CLEAR\_OPTICS
- .MESH\_PANELS

### FEATURES

- .Reflective\_Details, 1 zipper pocket

### FABRICS

- .74% Polyester / 26% Elasthane

## TANK TOP ELA

ITEM NO. 47603-5060

AVAILABLE SPRING '16



SIZES:34/XS, 36/S, 38/M, 40/L, 42XL | FIT:Performance\_fit  
COLORWAYS: 900 black 735 sea blue

### KEY FEATURES

- .SANITIZED\*
- .CLEAR\_OPTICS
- .MESH\_PANELS

### FEATURES

- .Reflective\_Details

### FABRICS

- .74% Polyester / 26% Elasthane

## TEE HALF ZIP SS VENTA

ITEM NO. 47603-5063

AVAILABLE FALL '15



SIZES:34/XS, 36/S, 38/M, 40/L, 42XL | FIT:Performance\_Fit  
COLORWAYS: 900 black 715 lavender (F '15) 735 sea blue

### KEY FEATURES

- .SANITIZED\*
- .CLEAR\_OPTICS
- .PHONE\_POUCH

### FEATURES

- .Zip on center front for an easy change and additional ventilation, Reflective\_Details, 26% Elasthane Mesh\_Panels, 1 zipper pocket, 3 elastic storage pockets

### FABRICS

- .74% Polyester / 26% Elasthane

## TEE FULL ZIP LS VERTA

ITEM NO. 47603-5064

AVAILABLE FALL '15



SIZES:34/XS, 36/S, 38/M, 40/L, 42XL | FIT:Performance\_Fit  
COLORWAYS: 900 black 455 hibiscus (F '15)

### KEY FEATURES

- .SANITIZED\*
- .CLEAR\_OPTICS
- .PHONE\_POUCH

### FEATURES

- .Reflective\_Details, 1 zipper pocket, 3 elastic storage pockets

### FABRICS

- .74% Polyester / 26% Elasthane

## BIKESHORT IVY

ITEM NO. 47603-5760

AVAILABLE FALL '15



SIZES:34/XS, 36/S, 38/M, 40/L, 42/XL | FIT:Regular\_Fit  
COLORWAYS: 900 black 735 sea blue 665 river green (F '15)

### KEY FEATURES

- .2WAY\_STRETCH COOLMAX\* FABRIC
- .PHONE\_POUCH
- .WAIST\_REGULATION

### FEATURES

- .Jet\_Stream, Back\_Yoke, Reflective\_Details
- 2 front hand pockets

### FABRICS

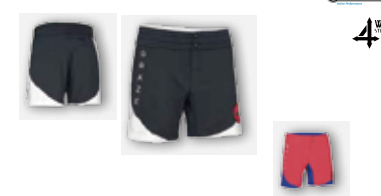
- fabric 1: 65% Polyester / 35% COOLMAX
- fabric 2: 88% Polyamid / 12%Elasthane



## BIKESHORT BASSISTA

ITEM NO. 47603-5761

AVAILABLE SPRING '16



SIZES:34/XS, 36/S, 38/M, 40/L, 42/XL | FIT:Performance\_Fit  
COLORWAYS: 900 black 455 hibiscus

### KEY FEATURES

- .4WAY\_STRETCH COOLMAX\* FABRIC
- .REFLECTIVE\_DETAILS

### FEATURES

- .1 zip pocket on the back, 2 front hand pockets

### FABRICS

- fabric 1: 86% Polyester / 14% Elasthane
- fabric 2: 65% Polyester / 35% COOLMAX

## SHORT LAZE

ITEM NO. 47603-5762

AVAILABLE SPRING '16



SIZES:34/XS, 36/S, 38/M, 40/L, 42/XL | FIT:Tight\_Fit  
COLORWAYS: 900 black 455 hibiscus

### KEY FEATURES

- .4WAY\_STRETCH FABRIC
- .COOLMAX\* LINED VUELTA CHAMOIS WITH SAT TECHNOLOGY

### FEATURES

- .Sanitized

### FABRICS

- .97% Polyester / 3% Elasthane



# BLIZZ



## BLIZZ

LIGHTWEIGHT, HIGHLY BREATHABLE, HELIA LS  
ALL MOUNTAIN & ENDURO LINE

### DRIRELEASE JACQUARD MESH

- . The look and feel of cotton, but with the benefits of a high-performance fabric
- . Dries four times faster than regular cotton
- . Adding extra ventilation to the casual look



### SMART FEATURES

- . Small Ticket\_Port for your lift ticket or other essentials
- . Integrated Clear\_Optics microfiber glasses wipe

### NIA

### 4\_WAY STRETCH SOFTSHELL FABRIC

- . Maximum freedom of movement
- . Lightweight, yet durable
- . Superior performance in terms of ventilation and tensile strength
- . Basic protection from wind & rain



### BOARDSHORTS\_CLOSURE

- . Perfect adjustability and great comfort
- . Boardshorts Style

### LACE\_PORTS

- . Holds the laces safely
- . Barspin resistant

### BONDED\_SEAMS

- . Very flat, but still super durable

### SANITIZED TREATMENT

- . For long lasting freshness





## TEE LS HELIA

ITEM NO. 47603-5021

AVAILABLE FALL '15



SIZES: 34/XS, 36/S, 38/M, 40/L, 42XL | FIT: Loose\_Fit  
COLORWAYS: 455 hibiscus (F '15) 715 lavender

### KEY FEATURES

- . SANITIZED\*
- . CLEAR\_OPTICS
- . TICKET\_PORT

### FEATURES

. Reflective\_Details

### FABRICS

- . fabric 1: 85% Polyester / 15% Cotton
- . fabric 2: 100% Polyester

## BIKESHORT NIA

ITEM NO. 47603-5720

AVAILABLE FALL '15



SIZES: 34/XS, 36/S, 38/M, 40/L, 42/XL | FIT: Performance\_Fit  
COLORWAYS: 455 hibiscus (F '15) 166 stone grey melange

### KEY FEATURES

- . 4WAY\_STRETCH FABRIC
- . BOARDSHORTS\_CLOSURE
- . PHONE\_POUCH

### FEATURES

. Sanitized\*, Triple\_Stitched seams, Bonded\_Seams, 2 zipped front pockets, Reflective\_Details

### FABRICS

- . 88% Polyamid / 12% Elasthane



## TEE LS 3/4 HELIA

ITEM NO. 47603-5022

AVAILABLE FALL '15



SIZES: 34/XS, 36/S, 38/M, 40/L, 42XL | FIT: Loose\_Fit  
COLORWAYS: 455 hibiscus (F '15) 715 lavender

### KEY FEATURES

- . SANITIZED\*
- . CLEAR\_OPTICS
- . TICKET\_PORT

### FEATURES

. Reflective\_Details

### FABRICS

- . fabric 1: 85% Polyester / 15% Cotton
- . fabric 2: 100% Polyester

## TANK HELIA

ITEM NO. 47603-5023

AVAILABLE SPRING '16



SIZES: 34/XS, 36/S, 38/M, 40/L, 42XL | FIT: Loose\_Fit  
COLORWAYS: 900 black

### KEY FEATURES

- . SANITIZED\*
- . CLEAR\_OPTICS
- . TICKET\_PORT

### FEATURES

. Reflective\_Details

### FABRICS

- . 100% Polyester



# LUZID

## LUZID

CASUAL, HIGHLY FUNCTIONAL  
ENDURO, PARK & URBAN LINE

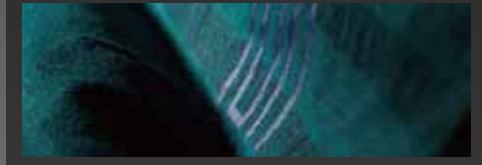
### ELECTRA

#### CASUAL STYLING

. Sportive and functional long sleeve with soft hand feel

#### DRIRELEASE FABRIC

. Looks like regular cotton but dries four times faster



#### CLEAR\_OPTICS

. Integrated glasses wipe called Clear\_Optics

#### REFLECTIVE\_DETAILS

. For additional safety on evening rides



### NOVA

#### FUNCTIONAL URBAN STYLE

. Cargo shorts in a comfortable, bike-specific fit  
. Flexible and robust

#### 2WAY\_STRETCH

. For full freedom of movement in any situation

#### TRIPLE STITCH\_SEAMS

. For added stability in the most stressed areas



#### SMART FEATURES

. Invisible water-repellent Phone\_Pouch in right pocket  
. Elastic Back\_Yoke guarantees perfect fit when pedalling and shredding hard





SPECIAL FEATURE

## TEE SS ELECTRA

ITEM NO. 47603-5042

AVAILABLE SPRING '16



SIZES: 34/XS, 36/S, 38/M, 40/L, 42XL | FIT: Loose\_Fit  
COLORWAYS: 900 black 666 river green melange

### KEY FEATURES

- .DRIRELEASE\* WITH FRESHGUARD\*
- .CLEAR\_OPTICS

### FEATURES

- .Reflective\_Details

### FABRICS

- .85% Polyester / 15% Cotton

## TEE LS MOTION

ITEM NO. 47603-5043

AVAILABLE SPRING '16



SIZES: 34/XS, 36/S, 38/M, 40/L, 42XL | FIT: Casual\_Fit  
COLORWAYS: 455 hibiscus

### KEY FEATURES

- .DRIRELEASE\* WITH FRESHGUARD\*
- .CLEAR\_OPTICS
- .TICKET\_PORT

### FEATURES

- .Sanitized\*, Reflective\_Details

### FABRICS

- .85% Polyester / 15% Cotton

## TEE SS LUZID

ITEM NO. 47603-5041

AVAILABLE FALL '15



SIZES: 34/XS, 36/S, 38/M, 40/L, 42XL | FIT: Casual\_Fit  
COLORWAYS: 455 hibiscus (F '15) 165 stone grey (F '15) 666 river green melange

### KEY FEATURES

- .DRIRELEASE\* WITH FRESHGUARD\*
- .SANITIZED\*

### FEATURES

- .Clear\_Optics, Reflective\_Details

### FABRICS

- .85% Polyester / 15% Cotton

## TANK TOP CURE

ITEM NO. 47603-5040

AVAILABLE SPRING '16



SIZES: 34/XS, 36/S, 38/M, 40/L, 42XL | FIT: Regular\_Fit  
COLORWAYS: 735 sea blue

### KEY FEATURES

- .DRIRELEASE\* WITH FRESHGUARD\*
- .CLEAR\_OPTICS

### FEATURES

- .Reflective\_Details

### FABRICS

- .85% Polyester / 15% Cotton

## CARGOSHORT NOVA

ITEM NO. 47603-5740

AVAILABLE SPRING '16



SIZES: 34/XS, 36/S, 38/M, 40/L, 42/XL | FIT: Loose\_Fit  
COLORWAYS: 901 black melange 736 sea blue melange

### KEY FEATURES

- .2WAY\_STRETCH FABRIC
- .PHONE\_POUCH
- .TRIPLE\_STITCH SEAMS

### FEATURES

- .Back\_Yoke, Jet\_Stream, Waist\_Regulation, Reflective\_Details, Leg hem adjustment, 2 hand pockets, 2 Velcro closed rear pockets, 1 Flap side pocket with zip

### FABRICS

- .18% Cordura / 77% Cotton / 4% EA

## PANT GRID

ITEM NO. 47503-5140

AVAILABLE FALL '15



SIZES: 24-25/XS, 26-27/S, 28-29/M, 30-31/L, 32-33/XL | FIT: Slim\_Fit  
COLORWAYS: 790 insignia blue denim

### KEY FEATURES

- .SLIM\_FIT 5 POCKET JEANS
- .2WAY\_STRETCH CORDURA\* FABRIC
- .PHONE\_POUCH

### FEATURES

- .Sanitized, U-Lock\_Holder, Triple Stitch Seams, Reflective\_Details

### FABRICS

- .18% Cordura / 77% Cotton / 4% EA

## LS VIOLET

ITEM NO. 47603-5640

AVAILABLE SPRING '16



SIZES: 34/XS, 36/S, 38/M, 40/L, 42XL | FIT: Regular\_Fit  
COLORWAYS: 735 sea blue

### KEY FEATURES

- .2WAY\_STRETCH WITH COOLMAX
- .SANITIZED\*
- .CLEAR\_OPTICS

### FEATURES

- .Vent\_Gap, Reflective\_Details

### FABRICS

- .70% Polyester / 27% Polyester Coolmax / 3% Elasthane

REFLECTIVE DETAILS



OUTLINE WEAR

BIKE 2016



# FIRST LAYER

## IN-SHORT CELL

ITEM NO. 47602-5781 AVAILABLE SPRING '16



SIZES: 30/S, 32/M, 34/L, 36/XL, 38/XXL | FIT: Tight\_Fit  
COLORWAYS: ■ 785 night blue

## IN-SHORT CHASE

ITEM NO. 47602-5780 AVAILABLE SPRING '16



SIZES: 30/S, 32/M, 34/L, 36/XL, 38/XXL | FIT: Tight\_Fit  
COLORWAYS: ■ 785 night blue

## IN-SHORT ALLY

ITEM NO. 47603-5791 AVAILABLE SPRING '16



SIZES: 34/XS, 36/S, 38/M, 40/L, 42/XL | FIT: Tight\_Fit  
COLORWAYS: ■ 455 hibiscus

### KEY FEATURES

- . 4WAY\_STRETCH FABRIC
- . CHANNEL FLOW LITE
- . COOLMAX™ LINED VUELTA CHAMY WITH SAT TECHNOLOGY

FEATURES . Sanitized \*  
FABRICS . 97% Polyester / 3% Elasthane

## ARM WARMER WRAP

ITEM NO. 47600-5850 AVAILABLE FALL '15



SIZES: S-M / L / XL  
COLORWAYS: ■ 900 black (F '15)

## LEG WARMER LINE

ITEM NO. 47600-5851 AVAILABLE FALL '15



FABRICS . 74% Polyester / 26% Elasthane

## SOCKS MID POLE

ITEM NO. 47600-5858 AVAILABLE FALL '15



SIZES: 35-38 / 39-42 / 43-46  
COLORWAYS: ■ 900 black (F '15) ■ 166 stone grey melange (F '15) ■ 645 olive (F '15)

## SOCKS SHORT ROLE

ITEM NO. 47600-5857 AVAILABLE FALL '15



### KEY FEATURES

- . MID-CUT SOCK

### KEY FEATURES

- . LOW-CUT SOCK

FABRICS . 67% Polyester Coolmax / 31% Polyamid / 2% Elasthane

## CAP ION MAIDEN

ITEM NO. 47600-5855 AVAILABLE FALL '15



SIZES: S/M, M/L  
COLORWAYS: ■ 900 black (F '15)

- FEATURES
- . NEW ERA - 9FIFTY
  - . A-FRAME SNAPBACK
  - . 3D embroidery

FABRICS 100% Cotton

## CAP BUTCH

ITEM NO. 47600-5856 AVAILABLE FALL '15



SIZES: S/M, M/L  
COLORWAYS: ■ 466 crimson red (F '15)

- FEATURES
- . NEW ERA - 9FIFTY
  - . A-FRAME SNAPBACK
  - . Trucker cap
  - . Print

FABRICS . Visor and front panel: 100% Cotton / back panels: 100% Polyester

## CAP SCRUB

ITEM NO. 47600-5859 AVAILABLE FALL '15



SIZES: S/M, M/L  
COLORWAYS: ■ 645 olive (F '15)

- FEATURES
- . NEW ERA - 9FIFTY
  - . A-FRAME SNAPBACK
  - . Trucker cap
  - . Print / embroidery

FABRICS . Visor and front panel: 100% Cotton / back panels: 100% Polyester

## BEANIE TAG

ITEM NO. 47600-5852 AVAILABLE FALL '15



SIZES: one size  
COLORWAYS: ■ 900 black (F '15)

- FEATURES
- . Very warm snowboard/ ski style beanie for those extra cold days.

FABRICS 100% Acrylic

## BEANIE SPOOK

ITEM NO. 47600-5854 AVAILABLE FALL '15



SIZES: one size  
COLORWAYS: ■ 735 sea blue (F '15) ■ 466 crimson red (F '15)

- FEATURES
- . Lightweight beanie with small embroidery

FABRICS 100% Acrylic

## NECKWARMER TEMPEST

ITEM NO. 47600-5853 AVAILABLE FALL '15



SIZES: one size  
COLORWAYS: ■ 735 sea blue (F '15)

- FEATURES
- . Lightweight neckwarmer made of Drirelease® fabric that dries four times faster than cotton, but has a very same look and even softer handfeel.

FABRICS . 85% Polyester / 15% Cotton

## LOGO BEANIE

ITEM NO. 48130-5821 AVAILABLE FALL '15

- FEATURES
- Simple & classic beanie with stitched ION logo

SIZES one size

COLORWAYS ■ 900 black ■ 100 white



## CAP - ION LOGO

ITEM NO. 48130-5992 AVAILABLE FALL '15

- FEATURES
- ClassicCAP with ION embroidery

SIZES one size

COLORWAYS ■ 900 black



## LANYARD

ITEM NO. 48500-8510 AVAILABLE FALL '15

- FEATURES
- Simple but stylish ION Lanyard to pool your keys

COLORWAYS ■ black/white

